

# Bitzer OSK 7051 & OSK 7441-K package

## Specifications

Brand	Bitzer
Type	OSK 7051 & OSK 7441-K package
Refrigerant	Freon
kW at -10°C/+40°C	185
kW at -20°C/+40°C	147.4
kW at -30°C/+40°C	89.6
kW at -40°C/+40°C	49.8
Electromotor Specs	55 kW at 2935 RPM and 15 kW at 2920 RPM
On steel base frame	✓
Remarks	capacity from OSK 7441-K, capacity OSK 7051 not found
Remarks	Please note: we will only offer this as complete cooling solution with capacity matching condensor and evaporators
Stock	1



## Description

### Used Bitzer OSK 7051 & OSK 7441-K package

Used well maintained freeze installation Bitzer OSK 7051/OSK 7441-K Open screw compressors. With an 55 kW at 2935 RPM electromotor and 15.6 kW at 2920 RPM electromotor. Our capacity table is based on the used type of Freon. You can also use these compressors on alternative types of Freon. For all the other specs (if available), see the picture of the manufacturer model plate or the attached pdf file.

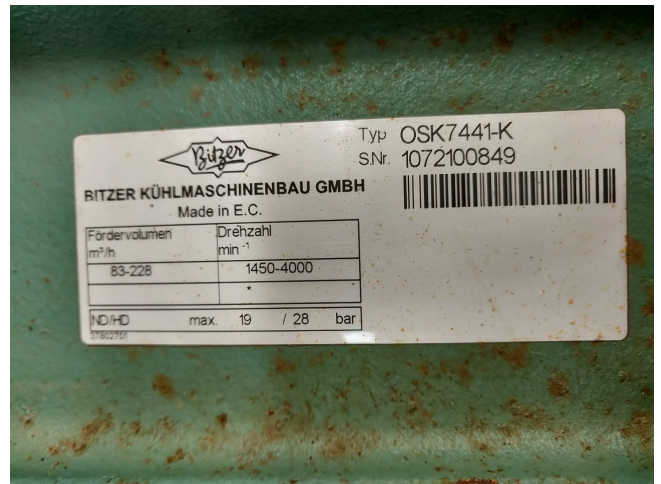
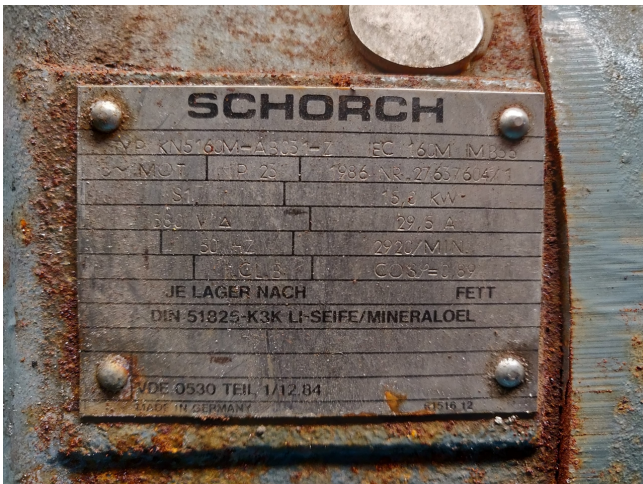
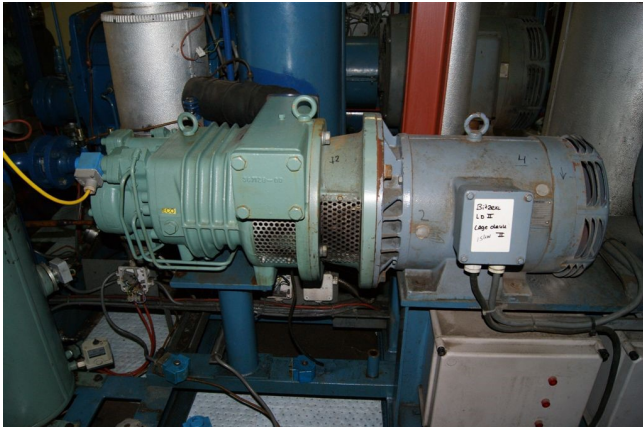
Please note: we will only offer this as complete cooling solution with capacity matching condensor and evaporators

\*Why choose for HOSBV? Were not only the largest used refrigeration specialist in Europe, but also, we deliver all equipment including an extensive test,



warranty and industrial cleaning.

\*Optional we can also perform a new  
paint job and arrange the logistics.



Compressor model	OSN7441-K	Operating mode	Standard
Refrigerant	R404A	Speed	2900 /min
Reference temperature	Devi point temp.	Useful superheat	100%
Liq. subc. (in condenser)	0 K	Additional cooling	Automatic
Suct. gas superheat	10,00 K	Max. discharge gas temp.	80,0 °C

<b>Result</b>			
Q [W]	Cooling capacity	Qac [kW]	Additional cooling
P [kW]	Power input	tsu [°C]	Liquid temp.
COP [-]	COP/EER	pm [bar(a)]	ECO pressure
mLP [kg/h]	Mass flow LP	Qac [kW]	sub cooler capacity (ECO)
mHP [kg/h]	Mass flow HP		

to	to	-15°C	-20°C	-25°C	-30°C	-35°C	-40°C	-45°C	-50°C
30°C	Q [W]	108507	87405	69478	54410	41801	31483	22986	16104
	P [kW]	36,5	34,5	32,7	31,1	29,7	28,5	27,5	26,7
	COP [-]	2,97	2,53	2,13	1,75	1,41	1,10	0,84	0,60
	mLP [kg/h]	3173	2617	2135	1717	1358	1051	791	572
	mHP [kg/h]	3173	2617	2135	1717	1358	1051	791	572
	Qac [kW]	—	—	—	—	—	3,99	8,37	12,35
	tsu [°C]	29,6	29,6	29,6	29,6	29,6	29,6	29,6	29,6
	pm [bar(a)]	—	—	—	—	—	—	—	—
	Qac [kW]	—	—	—	—	—	—	—	—
40°C	Q [W]	92510	73788	58026	44855	33943	24988	17719	—
	P [kW]	42,6	40,8	39,1	37,5	36,2	35,0	34,1	—
	COP [-]	2,17	1,81	1,49	1,20	0,94	0,71	0,52	—
	mLP [kg/h]	3110	2552	2068	1649	1289	981	721	—
	mHP [kg/h]	3110	2552	2068	1649	1289	981	721	—
	Qac [kW]	—	—	—	4,17	9,00	13,48	17,61	—
	tsu [°C]	39,6	39,6	39,6	39,6	39,6	39,6	39,6	—
	pm [bar(a)]	—	—	—	—	—	—	—	—